

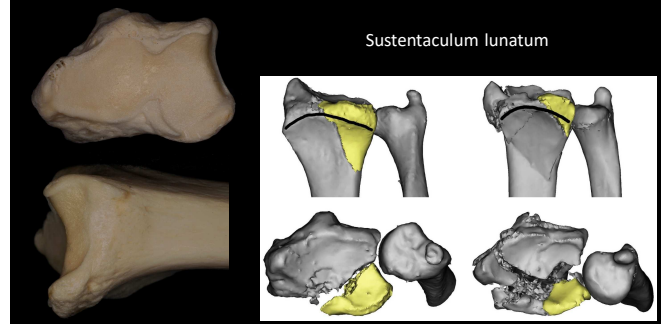
Involvement of the palmar lunate facet in intra-articular distal radius fractures

Szabolcs Benis, Wim Vanhove, Nadine Hollevoet

Department of Orthopaedic Surgery and Traumatology
University Hospital Ghent, Belgium

1

Palmar lunate facet fragment



2

Displacement and subluxation



3

Aims of the study

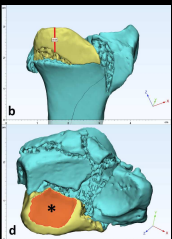
- common fracture patterns of the intermediate column
- prevalence of the palmar lunate facet fragment in intra-articular fractures
- size of the palmar lunate facet fragment - stable fixation?

4

Methods

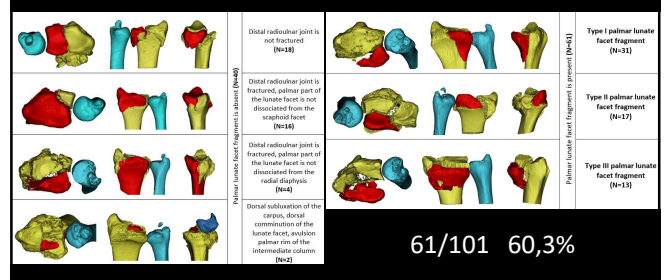
- 101 intra-articular fractures
- 2012-2018
- preop. CT
- Mimics software (Materialise)

- postop. radiographs of 42 fractures treated with palmar plate
- displacement
- subluxation



5

Results: fracture patterns of the intermediate column



6

Results: size of the palmar lunate facet fragment

Palmar lunate facet fragment types		Palmar cortex length (mm)	Lunate facet surface (mm ²)
Palmar lunate facet fragment with long cortex (Type I) N=31	Mean	16.8	118
	(range)	(9.2, 26.9)	(31, 238)
Palmar lunate facet fragment with short cortex (Type II) N=17	Mean	7.2	104
	(range)	(3.0, 10.0)	(31, 267)
Palmar lunate facet and palmar part of the scaphoid facet (Type III fragment) N=13	Mean	14.0	123
	(range)	(4.7, 22.3)	(47, 214)
Total N=61	Mean	13.5	115
	(range)	(3.0, 26.9)	(31, 267)

7

Results: palmar plate and locking screws

42/61 palmar plate

5/42 displacement of palmar lunate facet fragment

2/5 palmar subluxation of the carpus

8

Results

	Complete cohort N=42	Fractures with reduction loss N=5	Fractures without reduction loss N=37	p-value
Palmar cortex length (mm)	14.9 (4.0-26.9)	7.6 (6.1-9.0)	15.9 (4.0-26.9)	0.001
Ulnar cortex length (mm)	10.3 (0.0-23.8)	12.0 (7.7-20.5)	10.0 (0.0-23.8)	0.520
Articular surface lunate facet (mm ²)	110.8 (31.1-237.9)	87.2 (64.8-105.0)	114.0 (31.1-237.9)	0.155
Articular surface sigmoid notch (mm ²)	35.6 (0.0-89.9)	29.8 (15.8-39.7)	36.4 (0.0-89.9)	0.404

length of the palmar cortex of the palmar lunate facet fragment

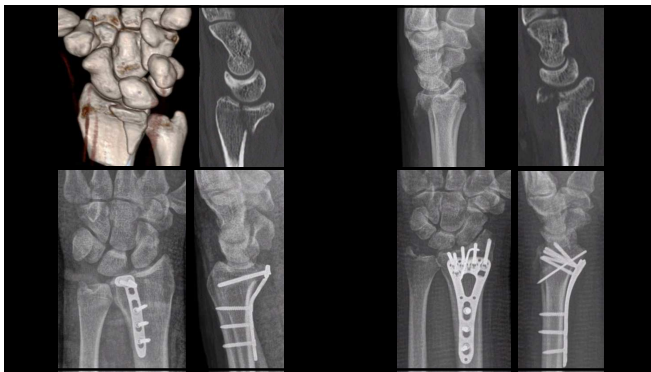
9 mm or shorter

9

Conclusion

- prevalence of palmar lunate facet fragment is high (60%)
- evaluation of key fragments on preop. CT scans is crucial
- small palmar lunate facet fragment - alternative fixation techniques

10



11



12