

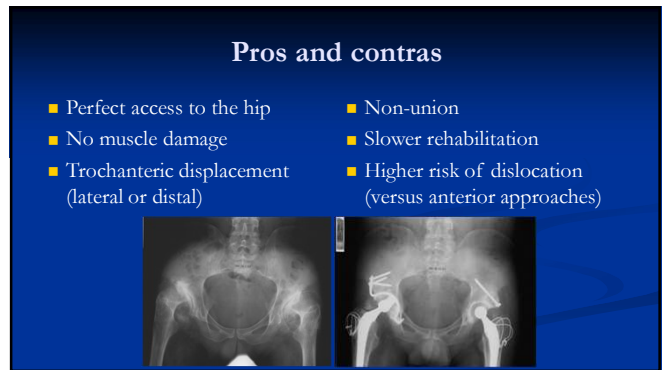
1



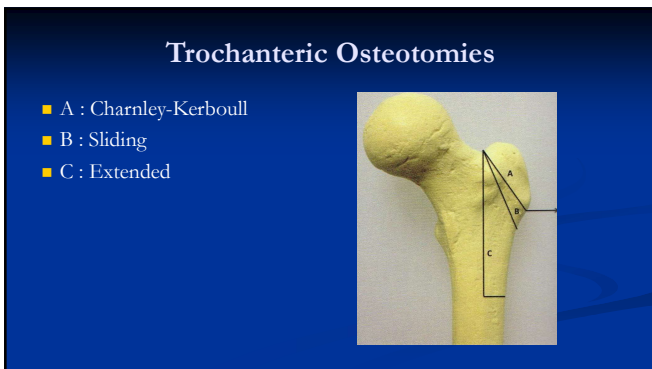
2



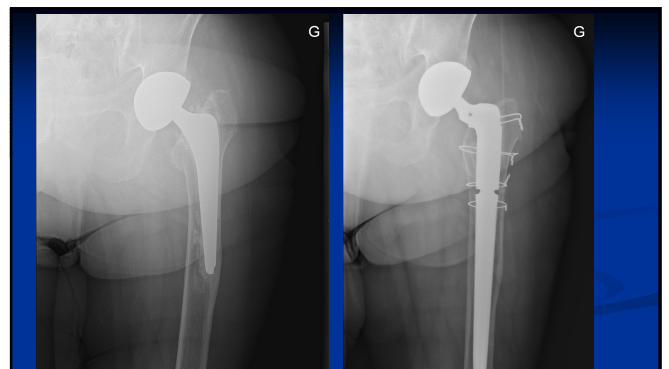
3



4



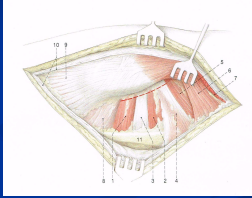
5



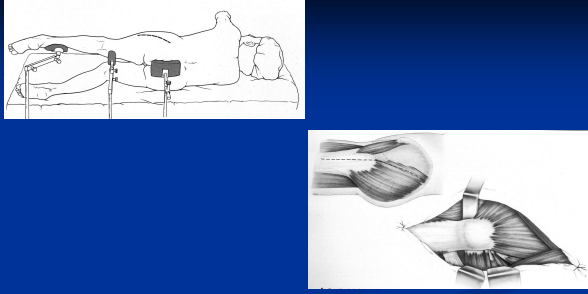
6

Charnley-Kerboull osteotomy

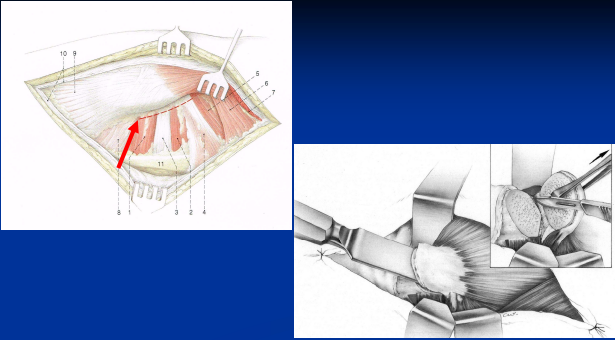
- Maintain the attachment of the short external rotators
- Is less frequently needed due to the use of lateralized femoral components (alleviating the need for lateral trochanter displacement)



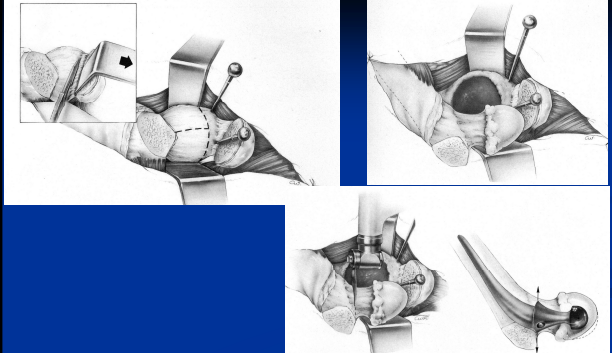
7



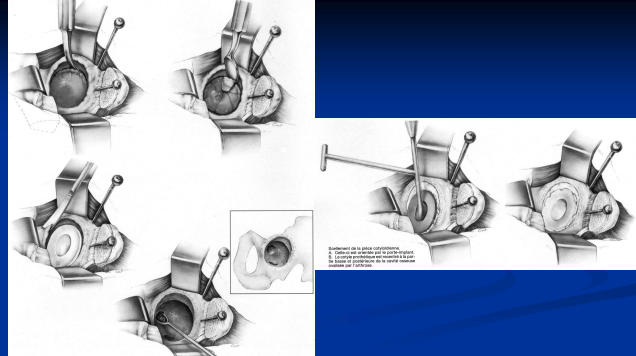
8



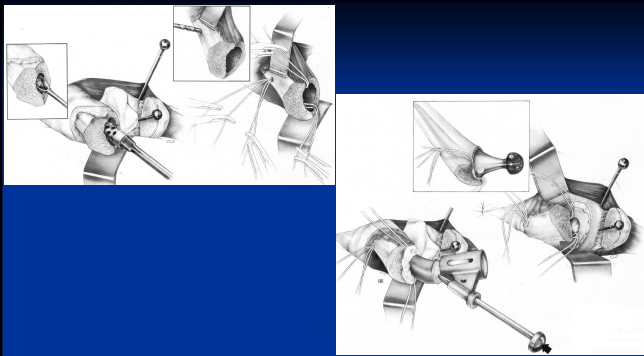
9



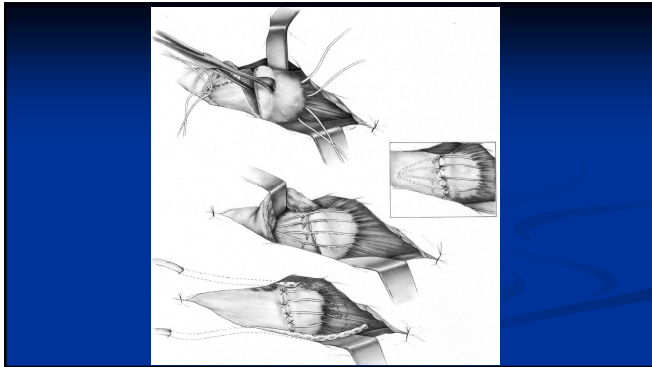
10



11



12



13

Sliding trochanteric osteotomy

- Keep the attachment of the gluteus medius and vastus lateralis
- Cut the short external rotators

14

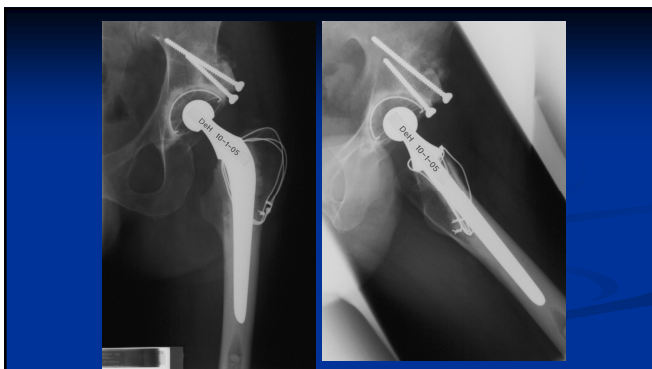
Extended trochanteric osteotomy

- Mostly used for revisions
- Length as needed
- Fixed by cerclage cables or wires

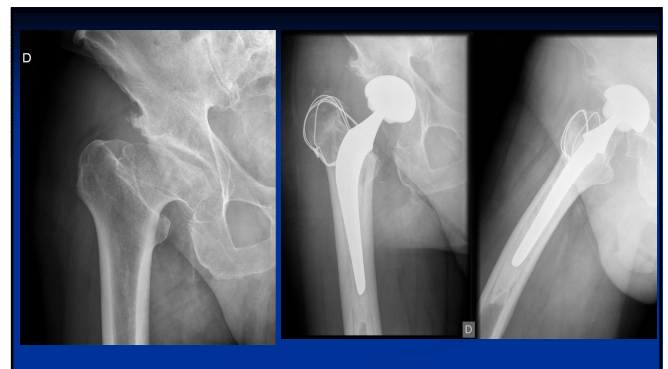
15



16



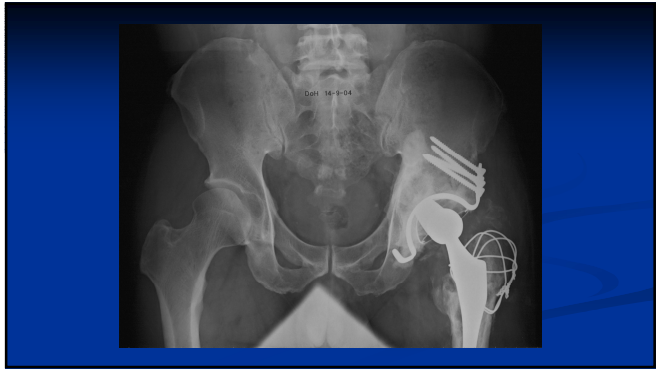
17



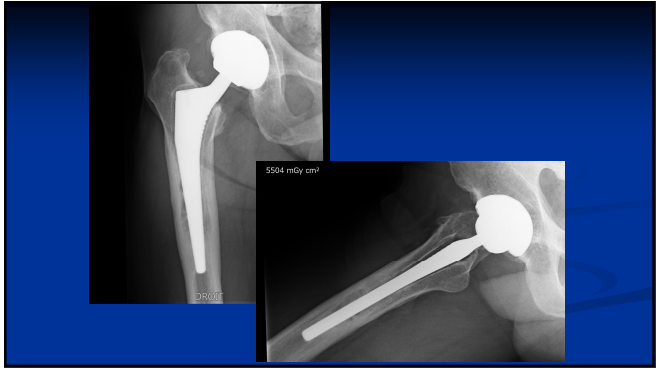
18



19



20



21



22



23



24